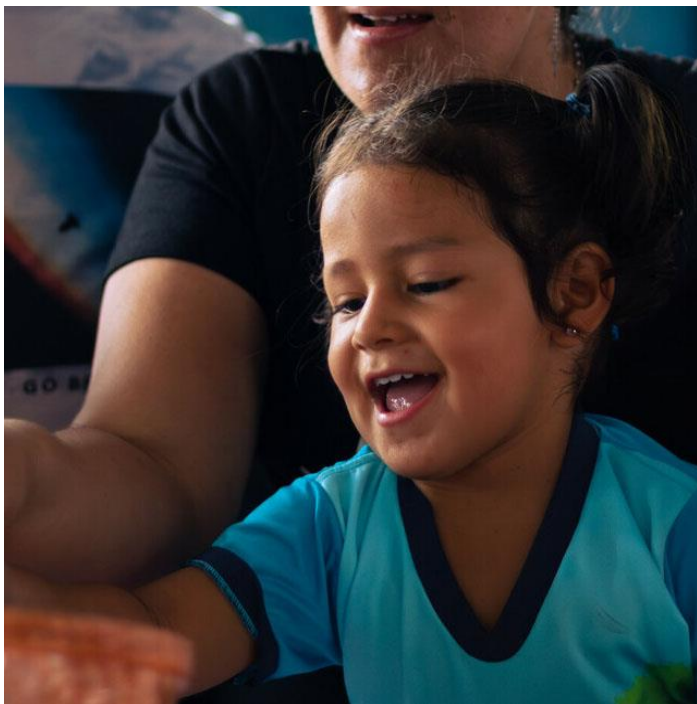


# ANNUAL UPDATE

# EL SALVADOR

## CHALATENANGO



**Together with your sponsorship, children and families are making positive changes in Chalatenango. Learn more about the valuable ways we work with children and communities.** Chalatenango is vulnerable to climate disasters, from floods and landslides to forest fires. This year, we worked with young adults to improve their climate resilience through adaptive farming techniques, like using solar-powered irrigation systems and reducing water use. In this part of El Salvador, women often do not have the same financial opportunities as men. Our programmes focus on encouraging girls to stay in school and pursue their dreams, providing vocational training to young women and discussing positive masculinities and gender equality with men.



140

men participated in workshops on healthy masculinities



243

returned migrant children were supported back in school



110

displaced families received support for their basic needs

**“THANKS TO A SCHOLARSHIP FROM PLAN, I AM PURSUING A BACHELOR'S DEGREE IN BUSINESS ADMINISTRATION.”**

Rosa, 16 years old, Sponsored Child





**NAME: NARDA**

**AGE: 17**

**DREAMS TO BE: A  
DENTIST**

**“I WANT TO INSPIRE YOUNG PEOPLE TO BELIEVE THAT THEY CAN DO ANYTHING.”**

## Meet Narda

**Like the child you sponsor, Narda is making steps towards her goal and achieving lasting change.**

Though hardships have threatened to prevent Narda from completing her education, this resilient student is not giving up on her dreams.

## Supporting the Next Generation

Narda enjoys drawing and reading history books, and dreams of speaking fluent English and becoming a dentist. When local schools closed during the peak of the COVID-19 pandemic, Narda struggled to get internet access from home, threatening her ability to keep up with her classmates. Once in-person learning resumed, challenges remained: this determined student had to travel 3 hours by bus to attend her English classes.

But despite these hardships, Narda has never wavered on her goals. Plan International has tried to make her journey to university a little easier. As a Plan Sponsored Child, Narda received a scholarship that helped her complete her high school education.

## From Learners to Leaders

Narda also participated in Plan International's Gender Transformative Political Leadership School, which focuses on nurturing the ambitions of young women, building confidence to become leaders and advocating for equality.

As the numbers of teen pregnancies continue to rise, our Leadership students have safe, supportive spaces for young women to talk about their lives, learn about their health and rights and make plans for the future.



*Narda is a diligent student.*

# OUR PROJECTS IN CHALATENANGO ARE HELPING CHILDREN



We work with children, youth, and communities to shift the agenda towards gender equality.

## STRONGER THAN EVER



**For the farmers of Chalatenango, climate change is posing a serious threat.**

To make matters more difficult, the COVID-19 pandemic worsened the financial situation of women in Chalatenango, sometimes to the point where they did not have enough food. Since February 2021, we have been working with Chalatenango residents, and particularly women, to develop climate-resilient agricultural practices and ensure more stable financial futures. This year, 77 women and 33 men learned how to use solar-powered irrigation systems and more efficiently use water in their farming. The participants improved their financial literacy and started small businesses producing coffee and vegetables.

We also talked about gender inequality and gender-based violence, and provided psychiatric counselling to women who have been victims of domestic violence.



## YOU CAN COUNT ON ME

**It takes a village to defeat gender inequality.**

In El Salvador, rates of teen pregnancy, gender-based violence, sexual violence and child marriage are high. This year, our efforts focused on creating supportive, nurturing environments for young girls from a young age, part of our work to ensure that vulnerable girls can live in a safe environment.

As part of our Community Family and Protective Families programmes, we worked with 983 local parents and caregivers to discuss non-violent discipline, positive parenting and gender equality within the home. We supported training for fathers and men on gender, self-esteem and healthy masculinities.

“I have learned to treat my daughters better; to teach them through affection and understanding.”

**- Rosa, 33 years old, parent of a Sponsored Child**



# YOUR SUPPORT MEANS BETTER FUTURES



The best is yet to come – and together we will continue to work for a brighter future for the children in Chalatenango.

- Many girls drop out of school due to early pregnancies. We will continue to provide sexual and reproductive health and rights training to young people.
- We will also work with local health centres to improve their resources for adolescent health, including menstruation and contraception.
- Many children in El Salvador experience limited involvement of their fathers. We will continue to work with men to discuss positive masculinities and involved parenting.

Thank you for your continued support.



“Thank you for walking this path with us, for being a part of Plan International. This allows us to create lasting impact for children and young people.”

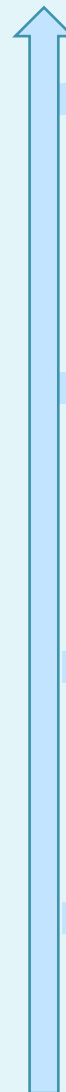
**Meybel Avelar**  
Program Area Manager

## THE PLAN EFFECT



Your sponsorship commitment is turned into effective long-term change – providing help for self-help. We involve children at the centre of all projects, bringing effective and sustainable solutions to families and communities. With Plan’s Effect, your commitment helps empower communities to transform their lives and futures.

## THE LAST 12 MONTHS



**MARCH**

**497**

young children receive health care



**APRIL**

**983**

caregivers participate in positive parenting workshops



**MAY**

**2**

maternity facilities receive equipment and supplies



**JUNE**

**327**

teen girls receive scholarships

