

Kourittenga

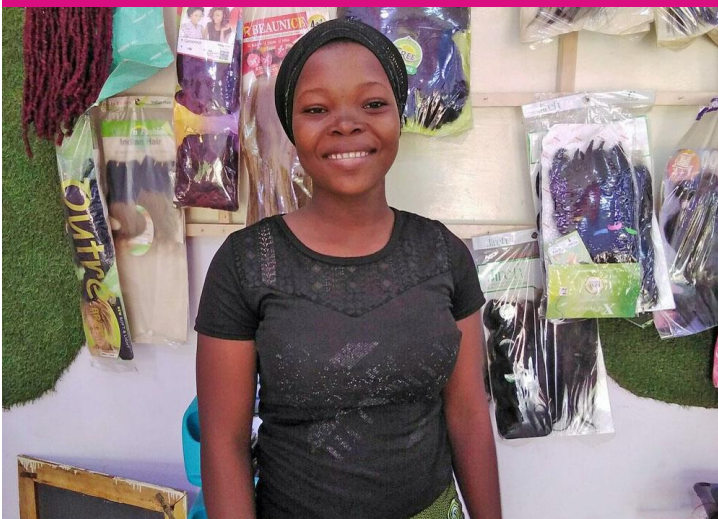
Burkina Faso

Positive changes are happening in Kourittenga. Learn more about how we're supporting children and girls' rights through our collaborative, equality-driven work.

High poverty and poor socioeconomic conditions in Kourittenga have severely impacted vulnerable groups, especially women, children, and people with disabilities, leading to increased risks of gender-based violence, early marriages, and school dropouts.

In collaboration with the community and government, Plan aims to advocate for inclusive quality education and proper hygiene facilities. As part of our educational initiative, we held a celebration of academic excellence attended by 3,025 people, including 2,000 children. Our programs to support sanitation facilities and menstrual hygiene management benefited all students, particularly 66% of girls aged nine and over.

"As part of Plan's initiatives, I chose to train as a women's hairdresser. Now I am getting skills to start my own business." Kaligueta, 16-year-old, Sponsored Child.



Children participating in Plan's initiatives.

Impact in Numbers

152

children trained in vocational skills

290

students received scholarship fees

60

children received exam completion excellence awards

Rediscovering the Joy of School



NAME:

Solange

AGE:

17 years old

DREAMS TO BE:

**Physical and Sports
Education Teacher**

“With the support of Plan, I was able to be accepted as a scholarship holder, all my fees were paid and I went back to school after losing a year.”



Meet Solange

Solange is currently in the fourth grade of secondary school and loves playing sports and singing. After her father passed away in 2013, her mother remarried and moved to another village, so Solange chose to stay with her father's family under the care of her uncle.

Solange dreams of becoming a physical education and sports teacher and puts all her effort into studying so she does not fall behind or risk being expelled.

Economic Obstacles

Thanks to her uncle's support, Solange progressed to the third grade of secondary school. However, while preparing for her 10th-grade exams, she learned that her uncle could no longer support her financially due to economic hardships.

This news was a crushing blow to Solange, who was deeply committed to her education. She feared for her future, knowing that without a proper education, her options would be severely limited. In this situation she would be forced to abandon her dream of becoming a teacher.

Learning For The Future

To improve access to education, entrepreneurship, and vocational training for sponsored children, particularly girls, Plan International has provided scholarships to Solange and other vulnerable children to help cover their school fees.

The scholarship has helped Solange rediscover the joy of attending school, and she is now more determined than ever to achieve her dream of becoming a physical education teacher.



Solange, 17, writing on a board in her school.

We Work With 10,922 Sponsored Children in Kourittenga

Projects That Support Lasting Change

Empowering Women

Lack of financial resources limits access to essential social and health services for vulnerable populations, such as women and children, and prevents them from starting local businesses, making it harder to fight poverty.

Through our Livestock initiative, we have supported and trained 257 women from 10 savings and loan groups to start up a successful livestock business. In collaboration with the community, we have also strengthened clean water services in several districts of Kourittenga, which means that people now have access to drinking water, eliminating their need to consume well water, which was a source of many illnesses.

To raise awareness about menstrual health and hygiene in schools, 30 teachers and staff have been trained in menstrual hygiene management, enabling them to better support and supervise students, especially young girls.



Children taking water from their school borehole.

271

girls improved menstrual hygiene with hygiene kits.



Children happy to receive their academic excellence prizes.

Inclusive Education

High poverty, poor education facilities and gender bias, have all contribute to a low literacy level in Kourittenga. Due to traditional norms, there is unequal access to education services, which negatively impacts young girls and children with disabilities.

Through our “Inclusive Quality Education” project, Plan aims to collaborate with schools and the government to promote equal opportunities for all students. As a result of our joined efforts with the community, five girls' hostels housing 410 vulnerable pupils were provided with food services to support them in their studies in schools.

Through our initiatives, we supported have students with disabilities, including a female student with limb disabilities, by providing prostheses, crutches, and a modular table to enhance her mobility and learning at school.



Fadilatou, 13-year-old, from Kourittenga.

“With Plan's help, I can pay my school fees, and I have advanced to the next grade with an average mark of 14.50.”
Fadilatou (13) from Kourittenga.

You're Supporting a More Equal Future



Haoulatou, 24, is a member of the Nongtaaba savings group.

Together, we're working to create a more just world.

Limited knowledge of sexual and reproductive health in Kourittenga has resulted in gender inequality, and violence. Next year, Plan will strengthen education and access to sexual and reproductive health services.

Lack of health and nutritional services has caused children under five years old to experience delayed growth. Next year, Plan will strengthen nutrition services to ensure that children receive the proper support.

33.9% of women in Burkina Faso have experienced physical violence. Next year, Plan will partner with the community to advocate for access to safe spaces for gender-based violence survivors.

Message from Plan Staff

"Another fiscal year has come to an end, and I'm very pleased with the progress we have made so far in the lives of children and the most vulnerable. On behalf of the children, their families, and the Centre East communities, I want to express our thanks and appreciation for your support."



Ouedraogo Mahomet,
Programme Area
Manager,
Kourittenga

The Plan Effect

Sponsored children are at the centre of everything we do, and they help plan our programmes based on what's important to them. Sponsors' donations are a gateway into a community. This helps build trust and credibility to attract even more funds from new sources. This makes more sustainable programmes possible in sponsorship communities. This powerful synergy is something we call The Plan Effect.

Progress in Numbers

39

women provided
with small garden
starter kits

1

borehole built for
clean drinking
water access

41

youth trained in
entrepreneurship
and leadership

4

latrine blocks
built in schools