

## Sanmatenga

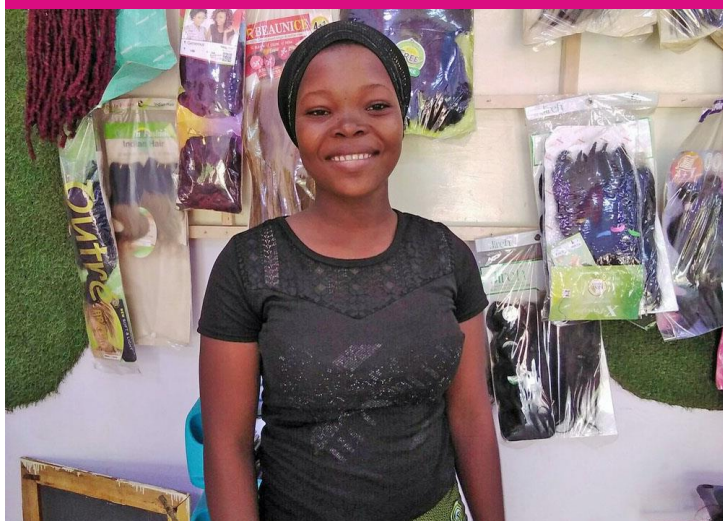
### Burkina Faso

**Positive changes are happening in Sanmatenga. Learn more about how we're supporting children and girls' rights through our collaborative, equality-driven work.**

Sanmatenga, like much of Burkina Faso, has been deeply affected by political unrest and armed conflict, leading to increased displacement and strained social services. Vulnerable groups such as women and children face limited access to essentials, and worsening gender discrimination restricts their opportunities.

In collaboration with the community and government, Plan aims to strengthen health and social services in Sanmatenga. To promote sustainable management of hydraulic structures, we established four management committees. Additionally, we provided training to 40 young people - 28 of whom were girls - in biopesticide production. This initiative helps them earn an income and improve their living conditions.

**"As part of Plan's initiatives, I chose to train as a women's hairdresser. Now I am getting skills to start my own business." Kaligueta, 16-year-old, Sponsored Child.**



Children participating in Plan's programmes.

### Impact in Numbers

# 328

**teachers trained in early education methods**

# 135

**women provided with hygiene kits**

# 70

**youth trained in entrepreneurship and e-commerce**

# Rediscovering the Joy of School



**NAME:**

**Solange**

**AGE:**

**17 years old**

**DREAMS TO BE:**

**Physical and Sports  
Education Teacher**

**“With the support of Plan, I was able to be accepted as a scholarship holder, all my fees were paid and I went back to school after losing a year.”**



## Meet Solange

Solange is currently in the fourth grade of secondary school and loves playing sports and singing. After her father passed away in 2013, her mother remarried and moved to another village, so Solange chose to stay with her father's family under the care of her uncle.

Solange dreams of becoming a physical education and sports teacher and puts all her effort into studying so she does not fall behind or risk being expelled.

## Economic Obstacles

Thanks to her uncle's support, Solange progressed to the third grade of secondary school. However, while preparing for her 10th-grade exams, she learned that her uncle could no longer support her financially due to economic hardships.

This news was a crushing blow to Solange, who was deeply committed to her education. She feared for her future, knowing that without a proper education, her options would be severely limited. In this situation she would be forced to abandon her dream of becoming a teacher.

## Learning For The Future

To improve access to education, entrepreneurship, and vocational training for sponsored children, particularly girls, Plan International has provided scholarships to Solange and other vulnerable children to help cover their school fees.

The scholarship has helped Solange rediscover the joy of attending school, and she is now more determined than ever to achieve her dream of becoming a physical education teacher.



Solange, 17, writing on a board in her school.

**We Work With 3,147 Sponsored Children in Sanmatenga**



# Projects That Support Lasting Change

## Responding to Crisis

**Political unrest has profoundly affected the security, livelihoods and food security for people in Sanmatenga.** In collaboration with the government and community leaders, Plan focuses on providing a holistic, gender- and conflict-sensitive, rapid and accessible response to the most vulnerable population, with a particular focus on children, women and people with disabilities.

Through this project, three water points (boreholes) were rehabilitated to provide internally displaced people and families with access to clean drinking water and the ability to grow vegetables.

To help children and women cope with post-traumatic stress after crisis, Plan has developed a psychosocial support area. This area includes play and stimulation materials (multi-sensory stimulation), display support, and a shed specifically for malnourished children, their mothers, and pregnant women.



A training session on soilless farming techniques.

# 150

**families were provided with soilless farming kits**



Traditional cloth weaving training session.

## Sustainable Development

**Political conflict and poverty have led to a high youth unemployment rate, with women being at a serious disadvantage.** This year, a key initiative focused on facilitating access to essential employment skills to develop capabilities for entrepreneurship and self-employment in young people.

Through this initiative, 100 young people including 70 girls were trained in entrepreneurship and micro-business management to help them lead their businesses more effectively. Furthermore, 50 young people including 28 girls participated in advanced training courses to support them integrate into their new work life successfully.

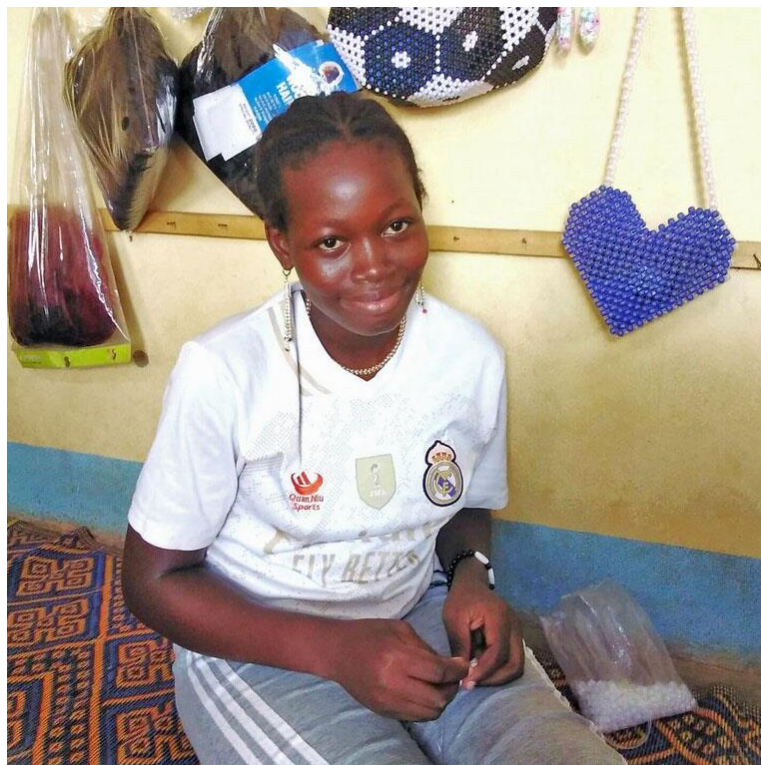
To increase women's economic and financial independence, 30 village agents were trained in the Village Savings and Loan (VSL) Association approach. This method promotes solidarity and allows members to save small amounts of money and share the interest at the end of the cycle.



Salimata, 11- year-old from Sanmatenga.

**"After my mom joined the women's group, she was able help my dad buy me new clothes and school supplies." Salimata, 11- year-old from Sanmatenga.**

# You're Supporting a More Equal Future



Absetou, 16, is learning beading through a Plan-supported vocational training programme.

**Together, we're working to create a more just world.**

In Sanmatenga, women and young people face severe poverty and limited career prospects. Next year, we aim to enhance employment opportunities for youth through entrepreneurship training and savings groups.

Political unrest and a strain on food resources have increased the risk of malnutrition in infants and children in Sanmatenga. In the coming year, we will raise awareness about food and nutrition services for young children.

There is a rise in the abduction and use of children by armed forces and groups in Sanmatenga. Next year, we will collaborate with the government to strengthen national and community-based child protection systems.

## Message from Plan Staff

"As a witness to the smiles and, above all, the hope that your donations bring to the children, adolescents and young people and their communities in the province of Sanmatenga, I would like to express my gratitude for your generosity."



Mathieu D. Mandi,  
Programme Area  
Manager,  
Sanmatenga.

## The Plan Effect

Sponsored children are at the centre of everything we do, and they help plan our programmes based on what's important to them. Sponsors' donations are a gateway into a community. This helps build trust and credibility to attract even more funds from new sources. This makes more sustainable programmes possible in sponsorship communities. This powerful synergy is something we call The Plan Effect.

## Progress in Numbers

**100** students supported with school grants

**95** women trained in craft-making business

**47** children trained in hairdressing and sewing

**14** children awarded trade installation kits