

Namentenga

Burkina Faso

Positive changes are happening in Namentenga. Learn more about how we're supporting children and girls' rights through our collaborative, equality-driven work.

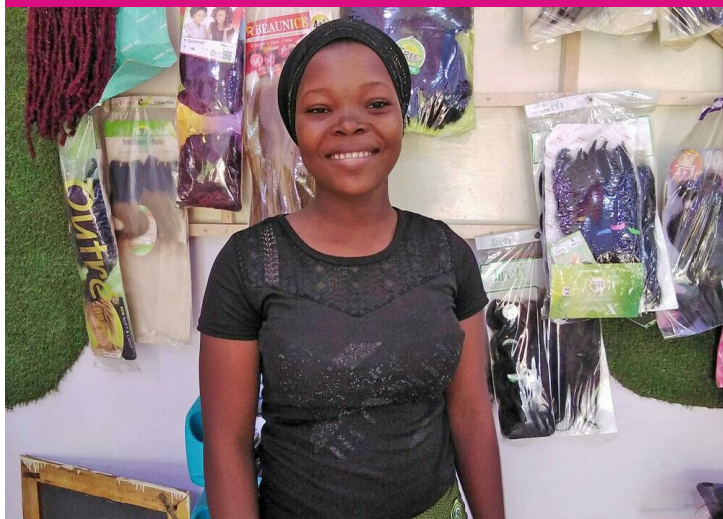
Namentenga, like much of Burkina Faso, has been deeply affected by political unrest and armed conflict, leading to increased displacement and strained social services. Vulnerable groups such as women and children face limited access to essentials, and worsening gender discrimination restricts their opportunities.

In collaboration with the community and government, Plan aims to strengthen employment opportunities for young people, especially young women and people with disabilities. As part of economic empowerment initiatives, we trained 54 village agents including 36 women in the Village Savings and Loans groups methods to improve their skills for entrepreneurship and business innovation.



Girls participating in a workshop.

"As part of Plan's initiatives, I chose to train as a women's hairdresser. Now I am getting skills to start my own business." Kaligueta, 16-year-old, Sponsored Child.



Impact in Numbers

328

teachers trained in new early education methods

37

children supported with school grants

30

women were trained in soap-making business

Rediscovering the Joy of School



NAME:

Solange

AGE:

17 years old

DREAMS TO BE:

**Physical and Sports
Education Teacher**

“With the support of Plan, I was able to be accepted as a scholarship holder, all my fees were paid and I went back to school after losing a year.”



Meet Solange

Solange is currently in the fourth grade of secondary school and loves playing sports and singing. After her father passed away in 2013, her mother remarried and moved to another village, so Solange chose to stay with her father's family under the care of her uncle.

Solange dreams of becoming a physical education and sports teacher and puts all her effort into studying so she does not fall behind or risk being expelled.

Economic Obstacles

Thanks to her uncle's support, Solange progressed to the third grade of secondary school. However, while preparing for her 10th-grade exams, she learned that her uncle could no longer support her financially due to economic hardships.

This news was a crushing blow to Solange, who was deeply committed to her education. She feared for her future, knowing that without a proper education, her options would be severely limited. In this situation she would be forced to abandon her dream of becoming a teacher.

Learning For The Future

To improve access to education, entrepreneurship, and vocational training for sponsored children, particularly girls, Plan International has provided scholarships to Solange and other vulnerable children to help cover their school fees.

The scholarship has helped Solange rediscover the joy of attending school, and she is now more determined than ever to achieve her dream of becoming a physical education teacher.



Solange, 17, writing on a board in her school.

We Work With 988 Sponsored Children in Namentenga

Projects That Support Lasting Change

Saving For a Good Future

Political conflict and poverty have led to a high youth unemployment rate, with women being at a serious disadvantage. This year, a key initiative focused on facilitating access to essential employment and vocational skills to develop capabilities for self-employment in young people.

Through our economic empowerment projects, 80% women have taken part in the savings group programme, and seen a rise in their income above the poverty line. In collaboration with the community, we raised awareness among 803 women in the savings group on various issues, including girls' education, gender-based violence, malaria, and financial literacy, to help them thrive.

30 young people, including four girls were trained in solar energy to diversify their sources of income and contribute to their economic empowerment.



Women participating in soap-making workshop.

20

girls trained in bead-making business



Women receiving hygiene and dignity kits.



Salamata, 17-year-old, from Namentenga.

Responding to Crisis

Political unrest has profoundly affected the security, livelihoods and food security for people in Namentenga. In collaboration with the government and community leaders, Plan focuses on providing a holistic, gender- and conflict sensitive, rapid and accessible response to the most vulnerable population, with a particular focus on children, women and people with disabilities.

As part of our initiatives, Plan partnered with the government to build 100 emergency shelters for 700 newly displaced individuals. We also organized 25 discussion groups and facilitation sessions to raise awareness about gender-based violence and sexual and reproductive health, with the goal of creating safe spaces for women and young girls, particularly in conflict-affected areas. Additionally, we distributed 200 dignity kits to girls, teenagers, and young women at risk of gender-based violence.

"The shelter is quite comfortable and allows us to rest and have a bit of privacy. We also received dignity kits and essential household items, which were a great relief." Salamata, 17-year-old, from

You're Supporting a More Equal Future



Salamata, from Namentenga.

Together, we're working to create a more just world.

In Namentenga, women and young people face severe poverty and limited career prospects. Next year, we aim to support employment opportunities for youth through entrepreneurship training and savings groups.

Political unrest and a strain on food resources have increased the risk of malnutrition in infants and children in Namentenga. Next year, we will raise awareness about nutrition and community health services for young children.

There is a rise in the abduction and use of children by armed forces and groups in Namentenga. Next year, we will collaborate with the government to strengthen national and community-based child protection systems.

Message from Plan Staff

"This year, we could support school and vocational training for several children. We contributed to the medical care of a sponsored child. Besides, with the security crisis, Plan has made a major contribution to the recovery of internally displaced persons by implementing several projects to strengthen the resilience of IDPs and hosts."



Elisabeth,
Sponsorship
Coordinator
Assistant,
Namentenga.

The Plan Effect

Sponsored children are at the centre of everything we do, and they help plan our programmes based on what's important to them. Sponsors' donations are a gateway into a community. This helps build trust and credibility to attract even more funds from new sources. This makes more sustainable programmes possible in sponsorship communities. This powerful synergy is something we call The Plan Effect.

Progress in Numbers

25 young women
trained in agri-
food processing

25 children trained in
sewing and
mechanics

15 young boys
trained in positive
masculinity

4 women trained in
child nutrition